

Ray America



RIOSensor +

This document is a product of Ray Co., Ltd. Includes laws on preventing unfair competition and protecting trade secrets. It may contain trade secrets and industrial technologies that are subject to protection under relevant laws and regulations. Therefore, the copyright of this document belongs to Ray Co., Ltd , and unauthorized disclosure, distribution, copying and use of all or part of the information contained in this document to a third party is strictly prohibited. COPYRIGHT 2023 RAY ALL RIGHTS RESERVED.

RAY IO Sensor line-up

Features	RIOSensor+	
Sensor size	Size 1	Size 2
True resolution(lp/mm)	24	
Theoretical resolution(lp/mm)	26.3	
Technology	Super CMOS + Optic Fiber + Csi	
Active area(mm)	22.2 x 29.6	26.6 x 35.5
Pixel matrix(mm)	1168 x 1562	1402 x 1874
Pixel size(μm)	19	
Thickness(mm)	7.3	
USB type	USB 2.0	
Case dimension(mm)	27.6 x 37.7	32.2 x 44.2
Cable length(m)	~3.0	
Fiber optic layer	Best	
Submersible	Best	
Various Imaging processing	Best	
Powerful TWAIN/SDK Integration	Best	
Strengths	<ul style="list-style-type: none">• High true resolution images 24 lp/mm• Various image filter• Fiber optics - protect detector from x-ray• Designed to withstand shocks, drops, and pulls• Submersible	

Key features

Ray America

Exceptional image quality

24 lp/mm true resolution

Design for durability

Reinforced casing to resist shock

Uniquely waterproof

Fully waterproof sensor

Imaging processing tools

Pre-programmed anatomic enhancements

Improved ergonomics

Cable wires are lined with Teflon to reduce friction

Enhanced workflow

TWAIN compatible with major imaging software

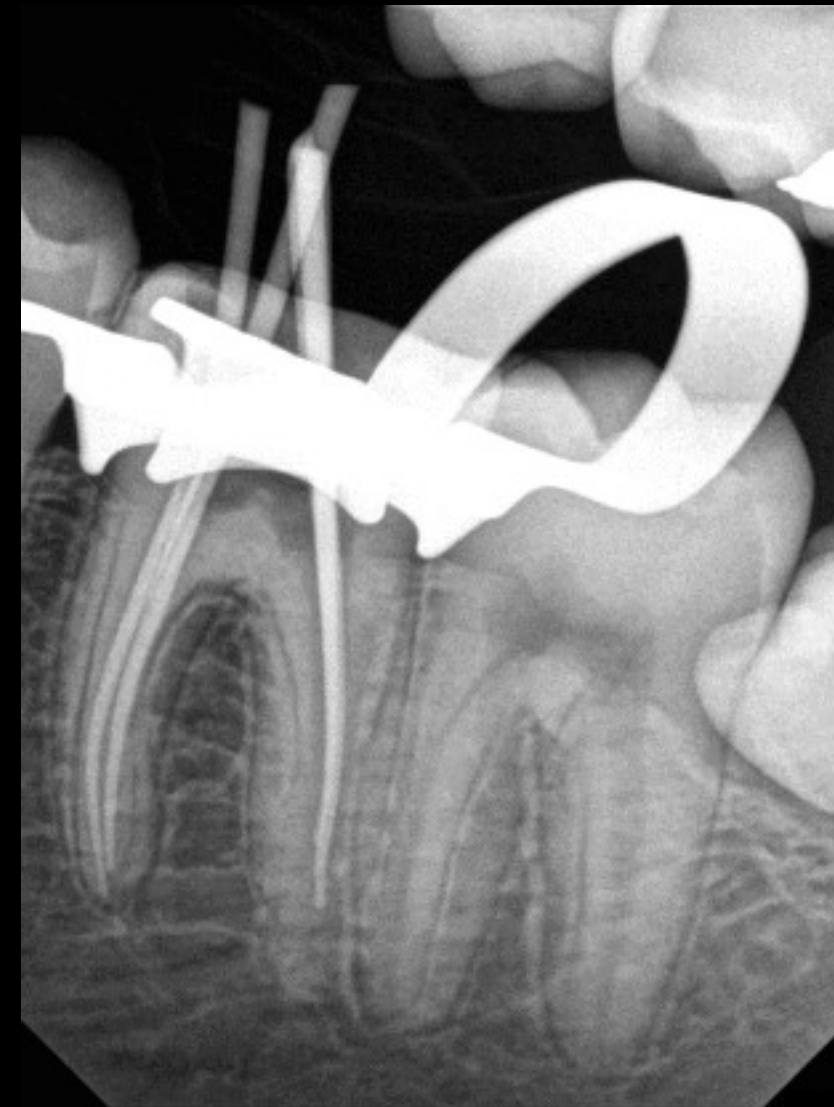
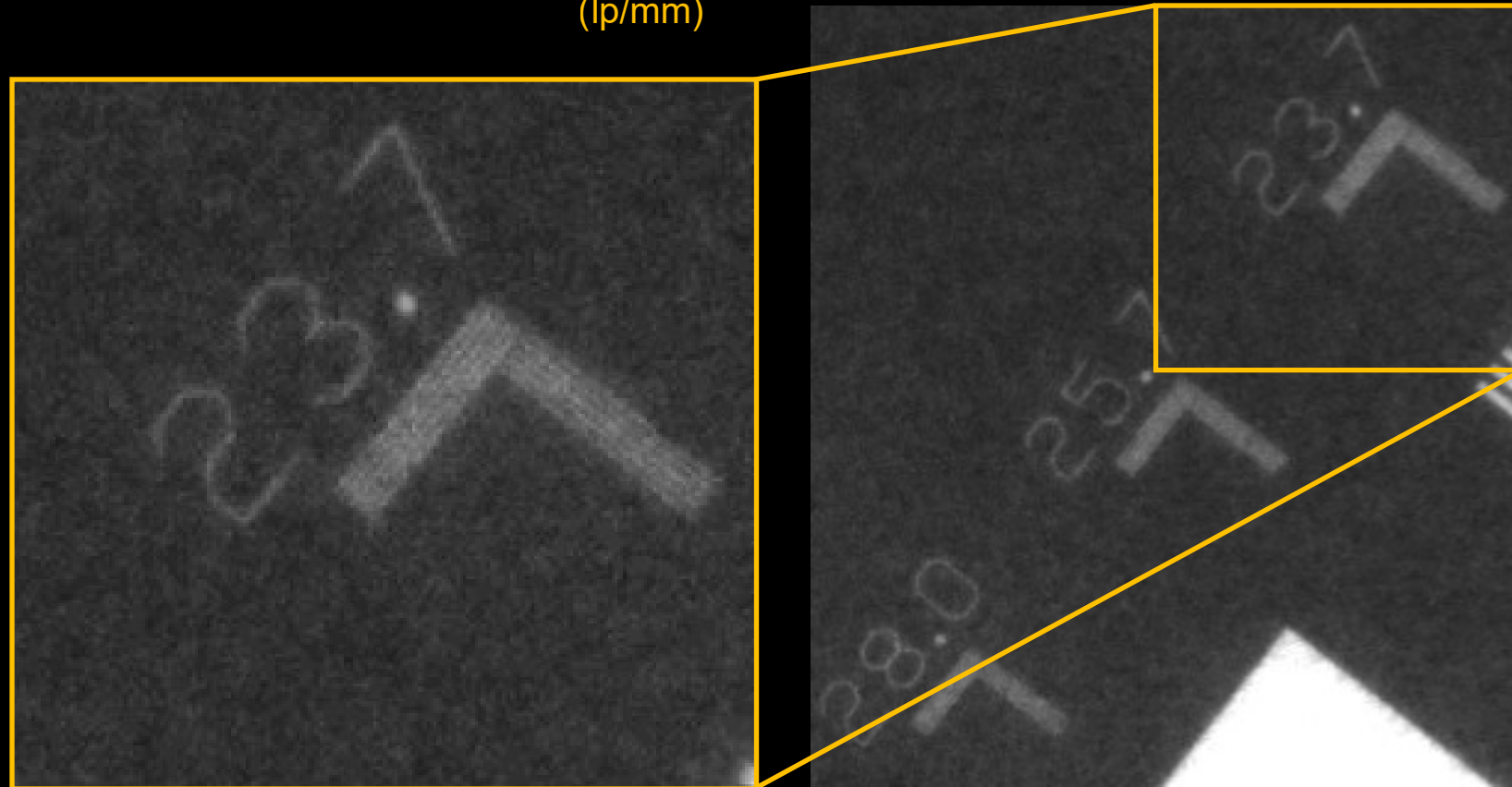


1. Exceptional image quality

True resolution 24 lp/mm

- True resolution 24 lp/mm
- Produces images with exceptional details and clarity
- Provides high-quality images with maximum diagnostic accuracy

24
(lp/mm)



2. Imaging processing tools

Various image enhancement modes

- Pre-programmed anatomic enhancements
 - Endo, Perio and DEJ filters
 - Optimize image contrast according to diagnostic
- Sharpness increased/decreases contrast



Endo

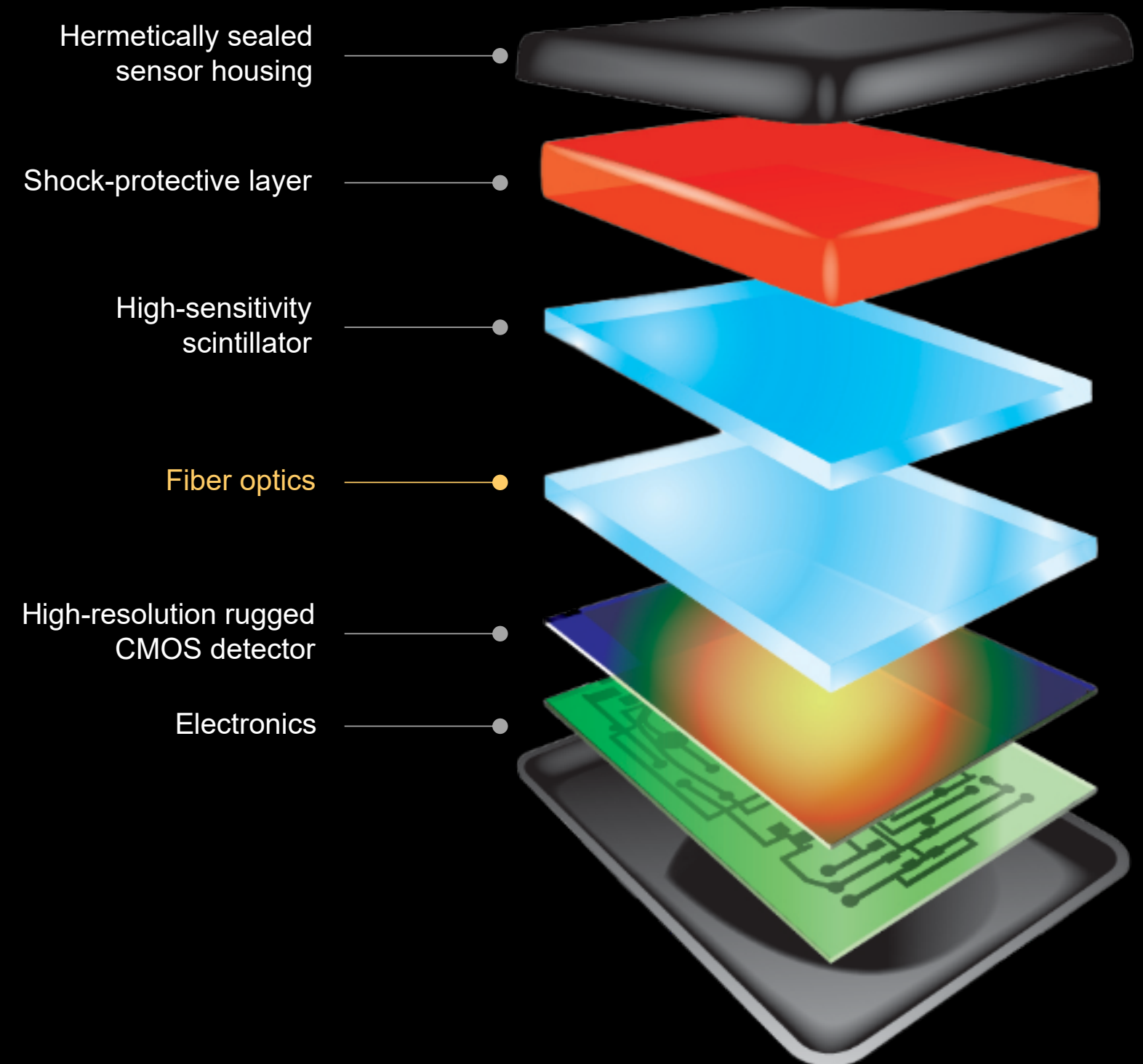
Perio

DEJ filters

3. Design for durability

Built-in parts for strength

- Reinforced casing to resist shock
 - Shocks, Bites, Drops
- Fiber optics
 - Protect detector from x-ray
 - Allows for an unlimited number of exposures to the sensor

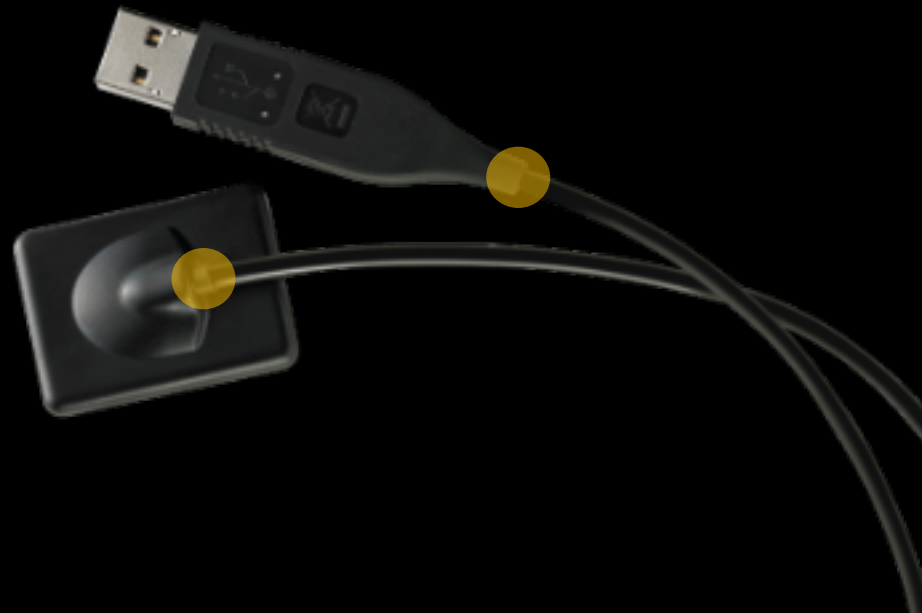


3. Design for durability

Powerful hardware for long-term use

- Reinforced cable connection points
 - Sensor cable attachment
 - USB plug connection
- Cable testing
 - A new, securely attached flexible cable can withstand tens of thousands of manipulations - more than 10 years of intensive use
 - Force testing
 - Flexion testing

Reinforced
connection points



Cable tested with
7 kg weight



4. Improved ergonomics

Design structure considering patient usability

- Newly designed cable
 - Cable wires are lined with Teflon to reduce friction
 - 20% thinner diameter reduction in cable thickness
 - The weaving of alloy mesh cable shielding is optimized for flexibility
- Improved flexibility

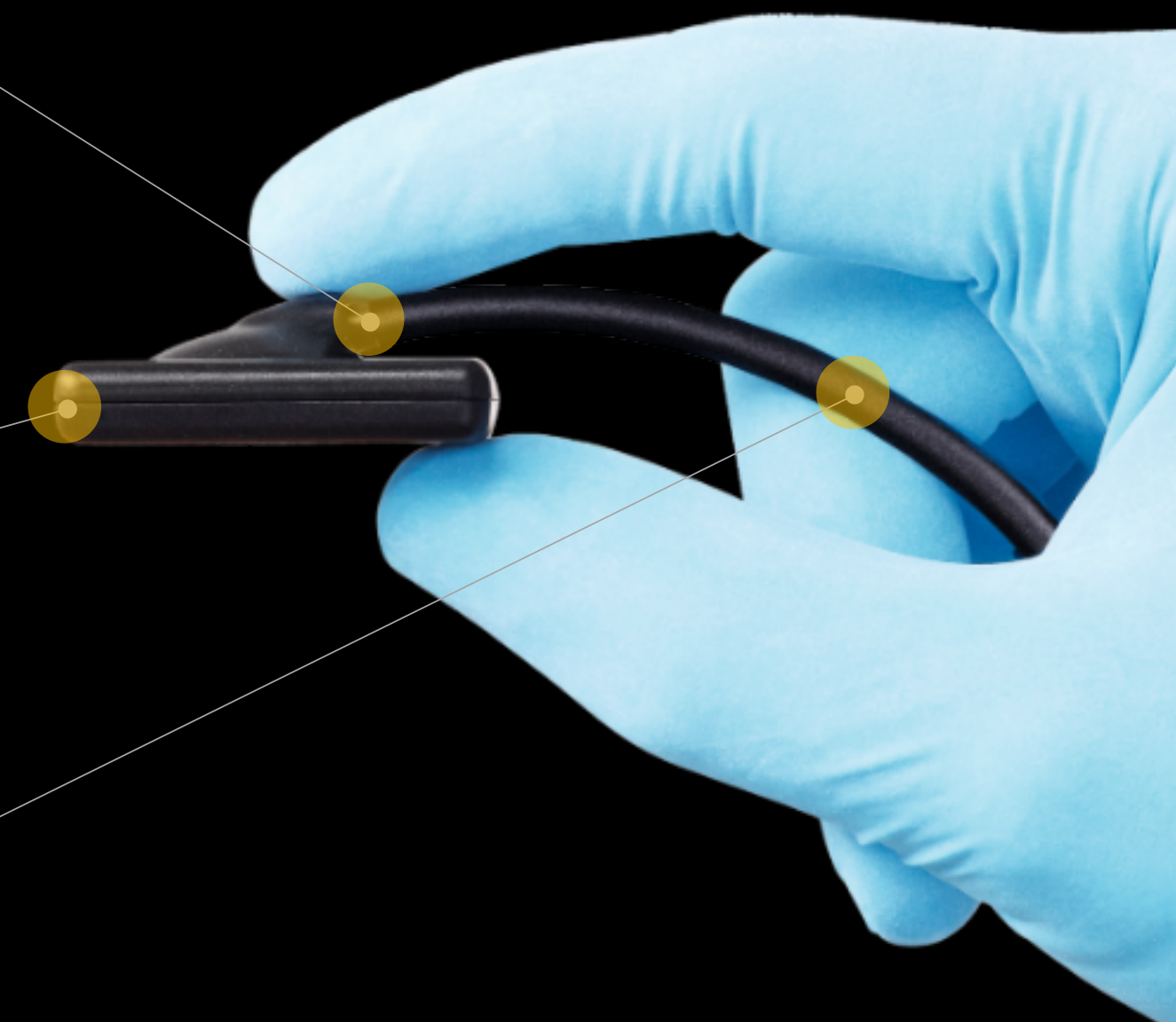
More compact



Rounded corners



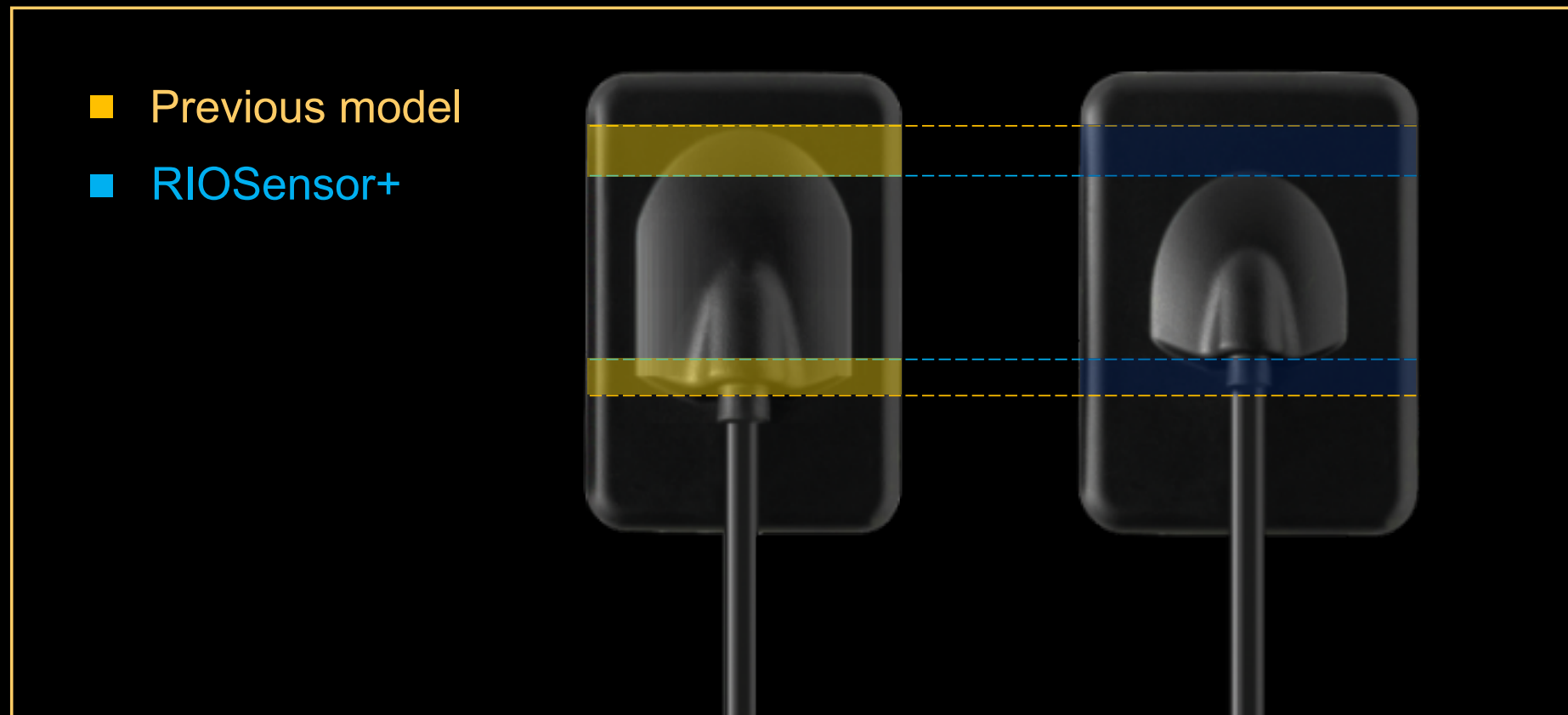
20% Thinner cable



4. Improved ergonomics

Significant ergonomic benefit

- Ergonomically designed rear cable entry
 - Significantly smaller cable housing compared to previous generation sensor
 - Reduced bulk for improved patient comfort
 - Easier placement and positioning of sensor improves image acquisition
- A flexible wire combined with a smaller cable housing provides significant ergonomic benefits



5. Uniquely waterproof

Fully waterproof sensor

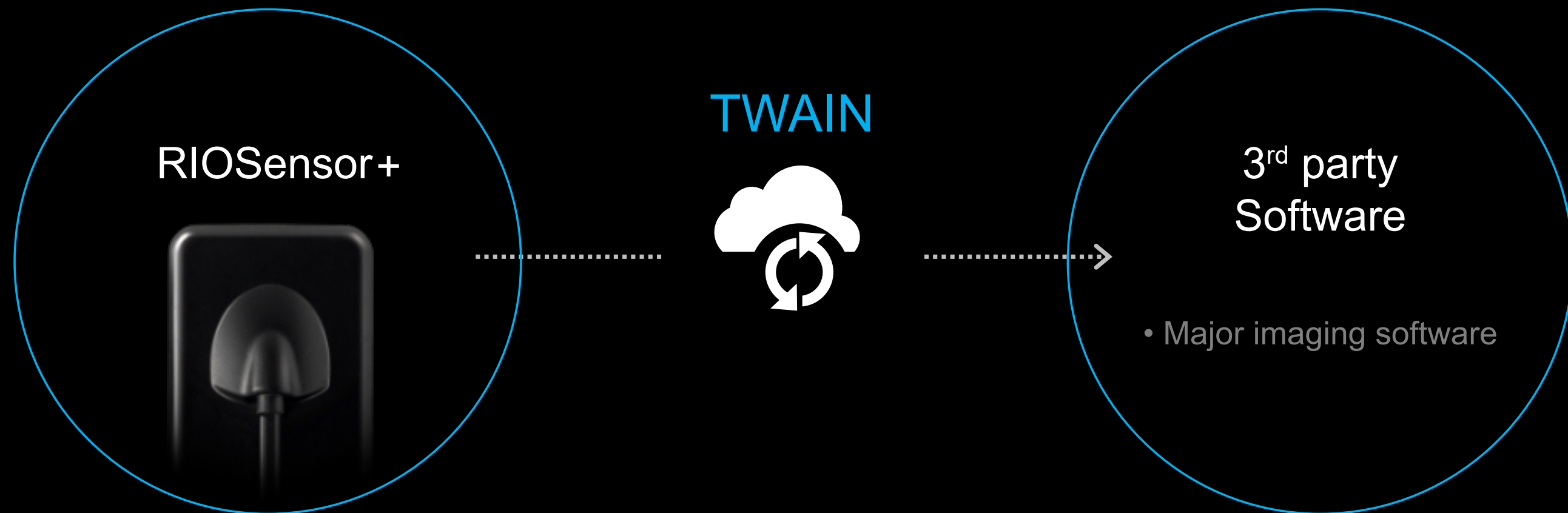
- Uniquely waterproof
 - 24 hours water immersion test
 - Test ensures the sensor is both airtight and watertight
 - The airtight design further protects the CMOS sensor
 - Fully waterproof sensor supports immersion in disinfecting solution for enhanced hygiene and safety



6. Enhanced workflow

Compatible with 3rd party software

- TWAIN compatible
 - Simplifies implementation
 - Allows for multi-sequence acquisition with TWAIN compliant 3rd party imaging software
 - Allows customers to continue using existing TWAIN compliant software
- Integration with major imaging software



FACE FORWARD

With RAY's FACE-DRIVEN DENTISTRY, you're not just adapting to the digital era-
you're leading it. Elevate your practice by embracing our three core pillars:
SCAN, DESIGN, MAKE.



SCAN



DESIGN



MAKE

Ray America

400 Kelby St, Ste 1500, Fort Lee, New Jersey 07024
tel. 800-976-4586 email info@rayamerica.com
www.rayamerica.com

OFFICIAL
PARTNERS

